



ISM LONG RANGE Wireless Nurse Call Systems

Smart-Caller BlueLine-ILU Wireless-Call System

Long Range Wireless System for Retirement Villages & Similar Applications

FEATURES & BENEFITS

- 
AUSTRALIAN DESIGN & MANUFACTURE Using ISM (Industrial, Scientific & Medical) spread spectrum wireless technology and components
- 
LONG RANGE COMMUNICATION Up to 2Km, ideal for multiple building sites and Retirement Villages
- 
MINIMAL USE OF BATTERIES Used only as necessary for portable devices or accessories. The ILU-HUB/Call-Point is plug-pack powered with battery back-up.
- 
MULTI-TASKING PRIME CALL-POINT Being the ILU's communication 'Hub' it allows up to 6 uniquely identifiable wireless + hard-wired trigger inputs
- 
SITE-WIDE PENDANT LOCATION Provides approximate location of Alerted Roaming Pendants for Staff Duress & Resident Alarm/Falls detection
- 
INBUILT ROOM MONITORING FACILITIES Can accommodate ILU call-points, pendants, smoke detectors, inactivity & intrusion sensors etc.
- 
SUPERVISED TWO-WAY COMMUNICATION All call traffic acknowledged by confirmation response back to source from System Head-End
- 
POWERFAIL & DAILY TESTS CALL MONITORING System infrastructure fully supervised to ensure continuity of performance
- 
INFECTION CONTROLLED CALL-BUTTONS Including call lock-out cleaning facilities
- 
CALL, CANCEL & ASSIST VIA 2 BUTTONS All Call Points (including ISM pendants) also provide Call, Cancel and Staff Assist
- 
BLUETOOTH SMARHOUSE OPTIONS Including Staff and Service Provider attendance monitoring & reporting
- 
PENDANTS INCLUDE CANCEL & ASSIST Ideal for roaming, Staff can deliver Cancel and Staff Assist from Resident's Pendants
- 
WIDE CHOICE OF HEAD-END CONNECTION System Repeaters and Nodes can connect to the head-end via Fibre, IP-LAN, RS485 or via wireless repeater on same or other channel
- 
12-YR MTBF RELIABILITY CERTIFICATION System Server has 100,000 hour 'Mean Time Between Failure' Certification; or select a computerless solution





SYSTEM APPLICATIONS

Designed and manufactured in Australia **BlueLine-ILU** is a special configuration of the well accepted **BlueLine-ISM** long range wireless emergency call system.

The benefits of the ISM (Industrial, Scientific & Medical) wireless protocols include protected frequency spectrums along with permitted higher transmit power levels.

This system is designed to suit large sites having multiple buildings typically including Community Living, 'Building Construction Sites', large Retail Complexes plus 'Schools and Universities' etc.

The following descriptions and illustrations have however been specifically configured to describe this system's ideal suitability for Retirement Village applications of which many such sites are seeking alternatives to the traditional telephone line PERS (Personal Emergency Response Systems) connections.



ISM WIRELESS REPEATER/NODE

A typical large scale system deploys a number of ISM Repeater/Nodes located at suitable locations throughout the site. These receive and process incoming calls from ILUs (Independent Living Units) or other locations. They are also capable of allowing persons wearing a miniature personal transmitter to 'call for help' whilst around the grounds whereby the system is also capable of identifying the approximate location of that person requiring assistance.

HOW IT WORKS

The system is based on each ILU, Domestic Home, School Room or Work Location being equipped with a communications 'Hub' device which also functions as a highly featured wireless call-point.



**ILU-HUB
(Wall Mounted)**

Known as the ILU-HUB it is fully enclosed and waterproof and is therefore also suitable for many specific external applications 'around the grounds' (such as school play grounds).

In addition to having its own call and cancel buttons it can also deliver high priority Staff Assist calls by the attending Staff pressing both buttons simultaneously.

This communications hub can also accommodate two hard-wired inputs plus up to four separate 'short-haul' UHF wireless accessories each having its unique identification at the system head-end for display, logging and reporting purposes.

These add-on devices can typically include wireless pendants and call-points perhaps in the bathroom or bedroom. Other possibilities include a duress call-point, wireless equipped Smoke detectors plus intrusion and inactivity sensors to name a few.

As with the total series of BlueLine-ISM call-points the ILU-HUB also has the same high degree of anti-bacterial/antifungal infection control.

In order to ensure maintenance free long term 24/7 operation the unit is fitted with a 12v plug-pack for continuous mains power connection and includes an internal rechargeable long life NiMH back-up battery. Alternatively any external 12v dc power

source can be deployed. Further levels of protection include the ability to send daily test calls to the head-end which in turn will generate a trouble report should a programmed test call not be received.

DUTY OF CARE OBLIGATIONS

Each ILU Hub device is capable of including the latest technology low cost Bluetooth-BLE Locator (Beacon) module whereby any nearby BLE 'Wearable' Tag or fixed device such as an environment temperature monitor alert is automatically detected and processed or suitably logged for possible retrieval.

This means that the visits of attending Carers and Service Providers are each recorded with the entry and exit times along with a record of real and average call attendance elapse times for Staff to have attended an alert call. This economical solution almost guarantees staff 'Due Diligence' with resulting high level of Facility 'Duty of Care' performance.

Carer Staff would usually wear a name-tag or wrist-strap wearable Tag that also includes an SOS button in order to generate an Assist or Duress call whilst visiting an ILU or other building/s or external locations such as perimeter Gates where the ISM-GateWatch version of the ILU Hub may be deployed.

SYSTEM HEAD-END DESIGN

The head-end may be computerless or computer based, the latter comprising a high quality solid state Server having no moving parts and a certified 'Mean Time Between Failure' of 100,000 hours (12 years). The nurse call software includes comprehensive logging and reporting capabilities with elapsed time call response reporting for each pre-determined location. It also includes total 'System Audit' to ensure the ability to maintain continuity of communication throughout the site.

Other items include the Head-End ISM Wireless Input Controller plus battery backed power supply and various other items or software modules required to deliver text to DECT or Wi-Fi Smart Phones, Pagers, Screens, Annunciators and other connected sub systems including fire panel monitoring etc as may be required.

PORTABLE COMMUNICATION SOLUTIONS

Clients choose the portable display devices that best suit their overall needs and a **BlueLine-ILU** system offers the necessary interfaces to suit most DECT, Wi-Fi, 4G, and traditional VHF and UHF POCSAG alphanumeric pocket paging systems.

The tendency to deploy the site's Wi-Fi infrastructure to provide text and voice communication is rapidly gaining acceptance. Accordingly **BlueLine's** economically priced Smart-Phone APP can form an integral part of the overall nurse call system whilst also allowing site-wide Wi-Fi access and/or wide area access (via SIM card insertion) as required.



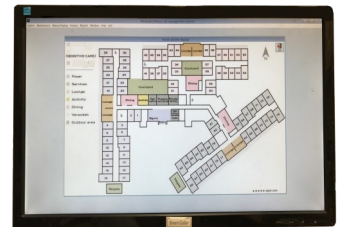
SMART-PHONE

Using the latest technology Server middleware program communicating with the Wi-Fi network the display traffic can be delivered to both fixed and portable display devices as required.

The smart-phone's special Android icons use the Australian Standard AS3811 colors and associated audio tones thereby immediately identifying the priority level of each incoming call.



ALPHANUMERIC PAGER



SMART TV DISPLAYS

ANNUNCIATOR DISPLAY OPTIONS

As with all BlueLine systems a choice of 16 or 8 character full color LED Annunciator displays may be included within the overall system. They feature 50mm characters whilst also providing audible tones with tone and display cadence in accordance with Australian Standard AS3811.



ANNUNCIATOR DISPLAY

SMART-HOUSE MONITORING POSSABILITIES

There is no practical limit to the level of monitoring that can be achieved via the **BlueLine-ILU** system. If necessary it is possible to monitor large numbers of devices and sensors via two or more ILU-HUB devices as may well be necessary within the facility's Community Centre, Resident's workshops or recreational locations.



REPORTING 'MADE EASY'

Gone are the days of Aged Care Facility staff spending hours evaluating log sheets and manually creating reports. The **BlueLine-ISM** nurse call system now automatically delivers those important reports to the selected recipients on time and by email.

The adjacent sample identifies a single page emailed report covering a range of client selected Key Performance (KPI) issues. It depicts them in both graphic and numeric displays showing both actual and percentage performance ratios.

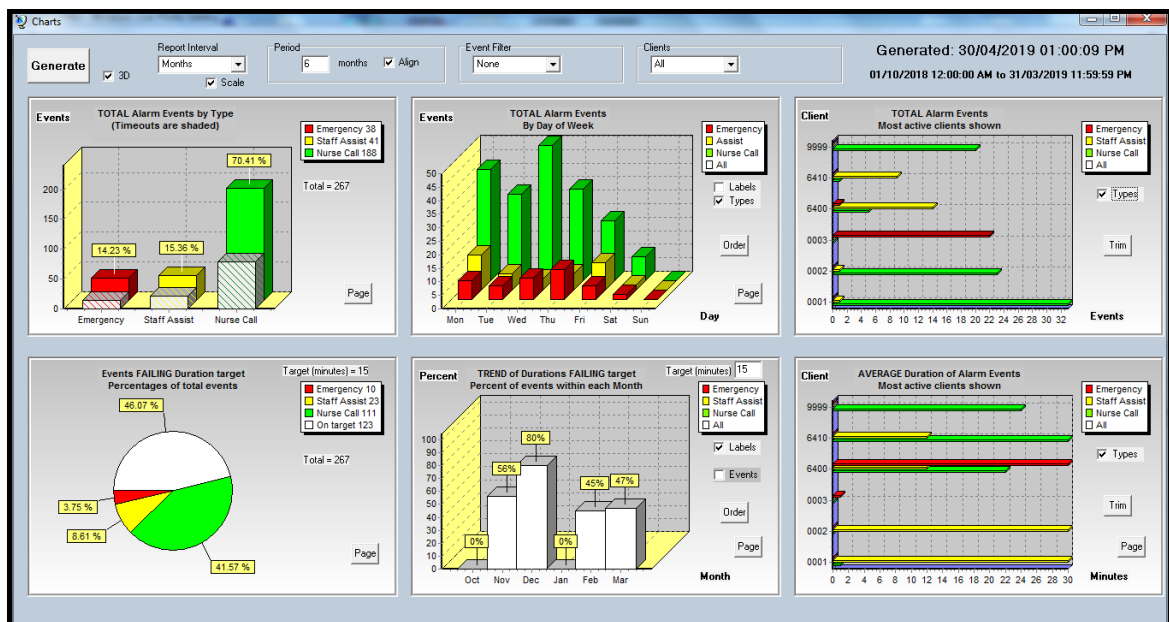
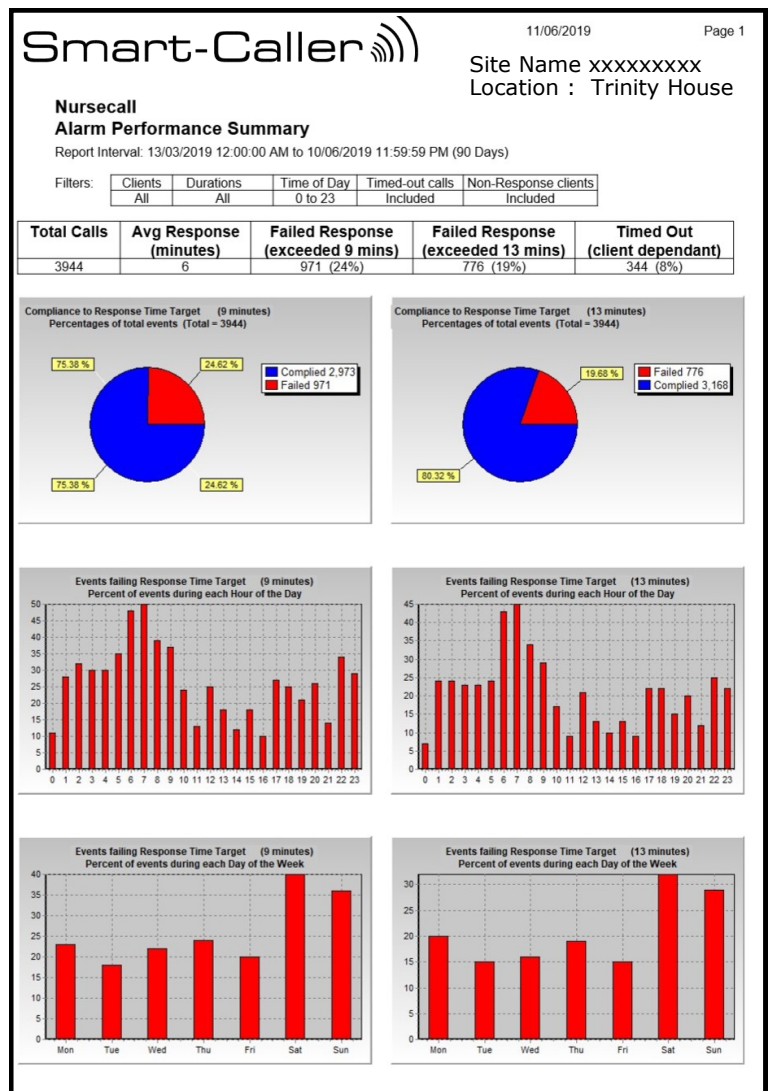
It then becomes an easy matter to also drill down onto issues that may need further investigation and/or reporting.

In this example we have created a 'Wing Activity Report' to identify wide ranging KPI parameters for all Resident call and staff response performance from those rooms or ILU units within that selected location (Wing).

DASHBOARD MONITORING

The Real Time Dashboard Display shown below allows management to keep an eye on KPI performance for a wide selection of subjects and/or sites. There are approximately 20 display categories from which to choose and customized versions are also possible.

It is also possible to generate a specific alert across the display screen should a serious event be detected thereby allowing immediate remedial action to occur.



Smart Caller Pty Ltd
sales@smartcaller.com.au
Tel: +61 3 9588 0833
www.smartcaller.com.au

Specifications & illustrations are subject to change without notice